

A

B

C

D

E

F

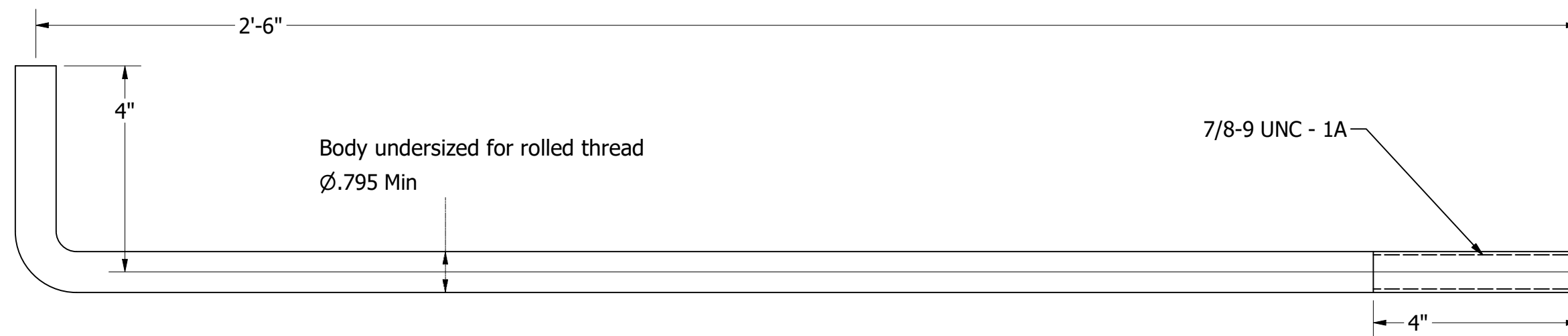
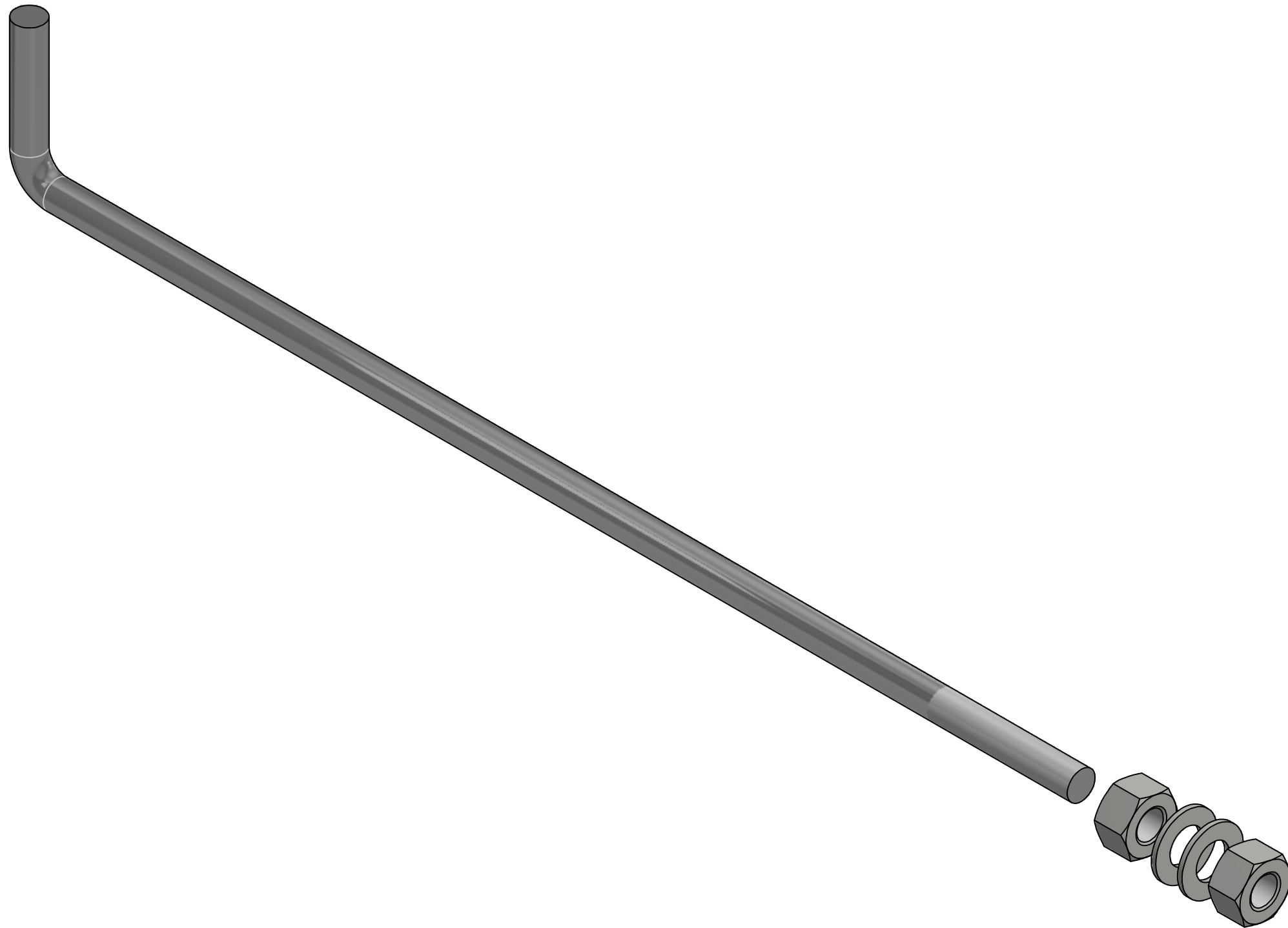
1

2

3

4

5



Available in the Following Grades:

- F-1554 Grade 55
- F-1554 Grade 55 Hot Dip Galvanized
- 

| UNLESS OTHERWISE SPECIFIED  |       |      |        | DRAWN: 12/15/2021  |  | Alexander Screw Products, Inc. |  | 8750 Pendleton Pike<br>Indianapolis, IN 46226 |  |
|---|-------|------|--------|--------------------|--|--------------------------------|--|---|--|
| DIMENSIONS ARE IN INCHES  |       |      |        | MATERIAL           |  | CHECK:                         |  | TITLE:  |  |
| .X  | .XX   | .XXX | ANGLE  | F-1554 Grade 55    |  | ENGR: 12/15/2021               |  | AB087530G                                     |  |
| ±   | ±     | ±    | ± 0.5° | FINISH             |  | MFG:                           |  | REVISION BY:                                  |  |
|   | 125 ✓ | ⊕    | ⌒      | Hot Dip Galvanized |  | CUSTOMER:                      |  | SCALE   |  |
| DIMENSIONING & TOLERANCING<br>PER ASME Y14.5-2009<br>ALL DIMENSIONS IN INCHES [MM]<br>BEFORE / AFTER SURFACE TREATMENT<br>REMOVE ALL BURRS AND SHARP EDGES<br>THREADS: EXT CLASS 2A, INT 2B<br>PROTECTIVE WRAP OR EQUIV. IDENTIFY<br>PART ON WRAP OR EQUIV. |       |      |        |                    |  |                                |  | SIZE  |  |
|   |       |      |        |                    |  |                                |  | DRAWING NO.                                   |  |
|   |       |      |        |                    |  |                                |  | Anchor Bolt Print                             |  |
|   |       |      |        |                    |  |                                |  | WT  |  |
|   |       |      |        |                    |  |                                |  | 1.373 lbmass                                  |  |
|   |       |      |        |                    |  |                                |  | SHEET   |  |
|   |       |      |        |                    |  |                                |  | 1 OF 1  |  |

P/N Anchor Bolt Print

P/N